



ESA Spectrum Analyzer Personality Upgrade Procedure

Purpose:

The purpose of this document is to provide a step-by-step procedure for obtaining, and installing the latest revision of measurement personalities into an Agilent ESA Spectrum Analyzer.

Procedure:

A. Download the Software Upgrade:

1. [Download the executable file to start the firmware upgrade procedure.](#)
A "Save As" dialogue text box will appear, as shown in **Figure 1**. This will allow you to store the Measurement Personality Upgrade Executable in a directory of your choice.

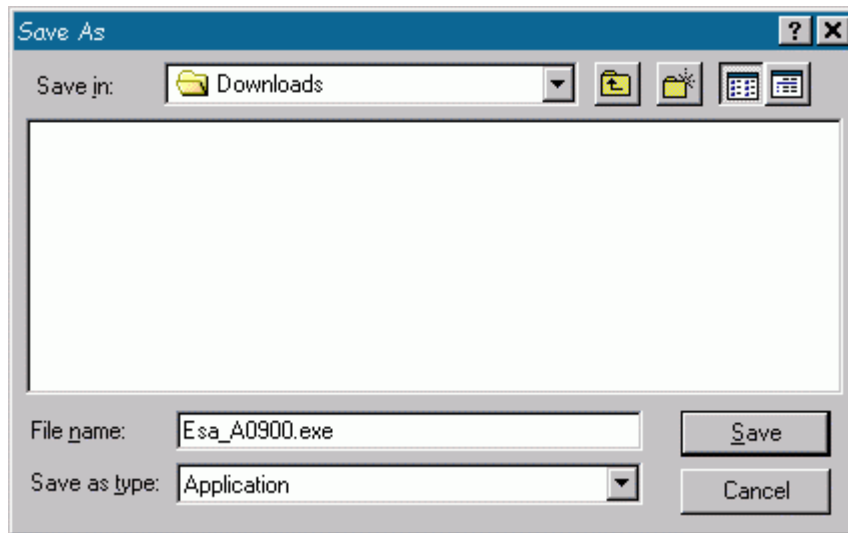


Figure 1

NOTE: The upgrade filename, as it resides on our server does not correspond to the revision of the personality upgrade being downloaded. But you can save it as such by entering a new filename in your "Save As" window. For example, the filename shown in Figure 1 could be changed to something such as 226a0115.exe so that you could more easily recognize it on your hard drive.

B. Create the Upgrade Disk Set:

NOTE: It is important to point out that the floppy disks which will be used to transfer the software to the analyzer should be freshly formatted diskettes!

Different Measurement Personalities require a different number of floppy disks to install the software into your ESA Spectrum Analyzer. Refer to the table below for the requirements of the personality being upgraded.

Personality	Number of Disks Required
Cable Fault (Opt. 225)	1
Phase Noise (Opt. 226)	1
Cable TV (Opt. 227)	1
Bluetooth™ (Opt. 228)	2
Modulation Analysis (Opt. 229)	2
ESA to 89601A Link (Opt 231)	2
8566/8B Prog. Comp. (Opt. 266)	1
8590 Prog. Comp. (Opt. 290)	1
CdmaOne (Opt. BAC)	3
GSM (Opt. BAH)	3
FM Deviation (J35 or J36)	1

It is highly recommended that you label the required disks ahead of time with the personality name, option number, revision, and disk number, to avoid any confusion.

Bluetooth is a trademark owned by Bluetooth SIG, Inc., U.S.A. and licensed to Agilent Technologies, Inc.

1. Double click on the downloaded upgrade executable file which was stored locally.
The text box shown in **Figure 2** will briefly flash on the display.

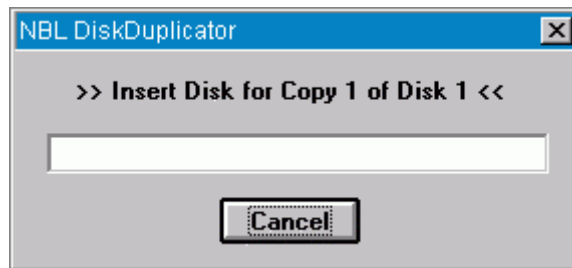


Figure 2

NOTE: This flashing text box will be replaced with the text box shown in **Figure #3** if a disk is not inserted within approximately 10 seconds.

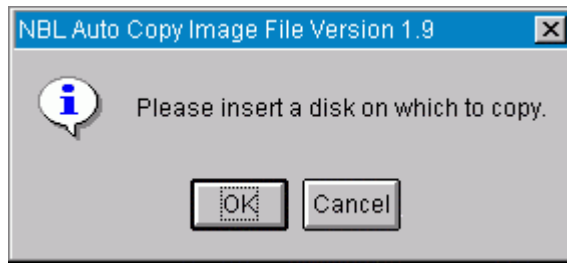


Figure 3

2. Insert the first blank floppy disk in the set into your computers floppy disk drive and click on "OK". The text box shown in **Figure 4** will be displayed which verifies if it is OK to overwrite the disk.

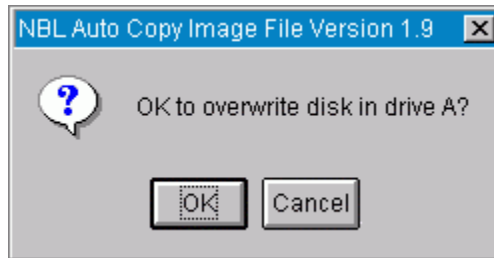


Figure 4

3. Click on "OK" and wait for the upgrade disk creation program to create the installation disk. The text box shown in **Figure 5** will be displayed as the tracks are recorded onto the disk.

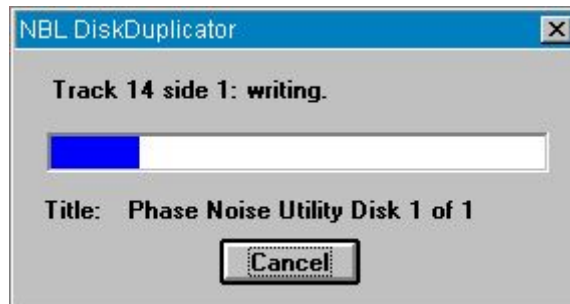


Figure 5

4. If there is more than one disk to the set you will be asked to insert them once the preceding disk has finished. Continue to insert the disks until the set is complete, at which time the text box shown in **Figure 6** will be displayed.

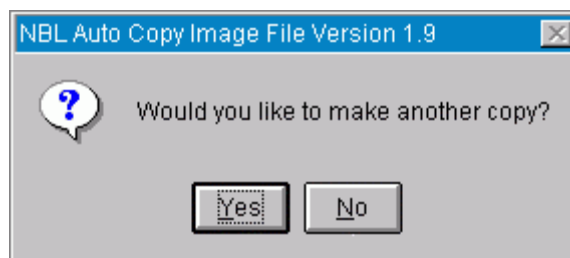


Figure 6

C. Install Measurement Personality Upgrade:

1. Insert the first floppy disk of the set into the ESA floppy disk drive.
2. Press [System] {More} {Personalities} {Install}
The analyzer will look at the floppy disk in the drive to get the installation information about the personality being upgraded and then display it in the “**Personality Installation Utility**”.
3. Press {Verify Disks} and follow the on-screen instructions.
This will verify the contents of the floppy disk set before the actual installation is attempted. This should be done before upgrading a measurement personality because if the actual install fails due to a bad disk the prior installed version will be deleted also.
4. Once the verification is complete press {Install Now} and follow the on-screen instructions to install the upgrade.
If there are multiple disks to the upgrade set the “**Personality Installation Utility**” will prompt you for the other disks as they are required.
5. When the installation process has been completed press {Exit Installer}.
6. To insure that the upgraded personality is ready for use it is recommended that you cycle the instrument power before use.
While this step may not be absolutely required for all upgrades, it certainly should hurt.

D. Verifying the Upgraded Version of the Measurement Personality Software:

To verify the revision of the upgraded measurement personality, press [System] {More} {Show System}

You should find this information near the middle of the screen. It will list the option number, the measurement personality name, and the version of the software currently installed.

Last Updated: **28 August 2002**